

# Walsingham Commons

12887 – 12987 Walsingham Road  
Largo, Florida 33774

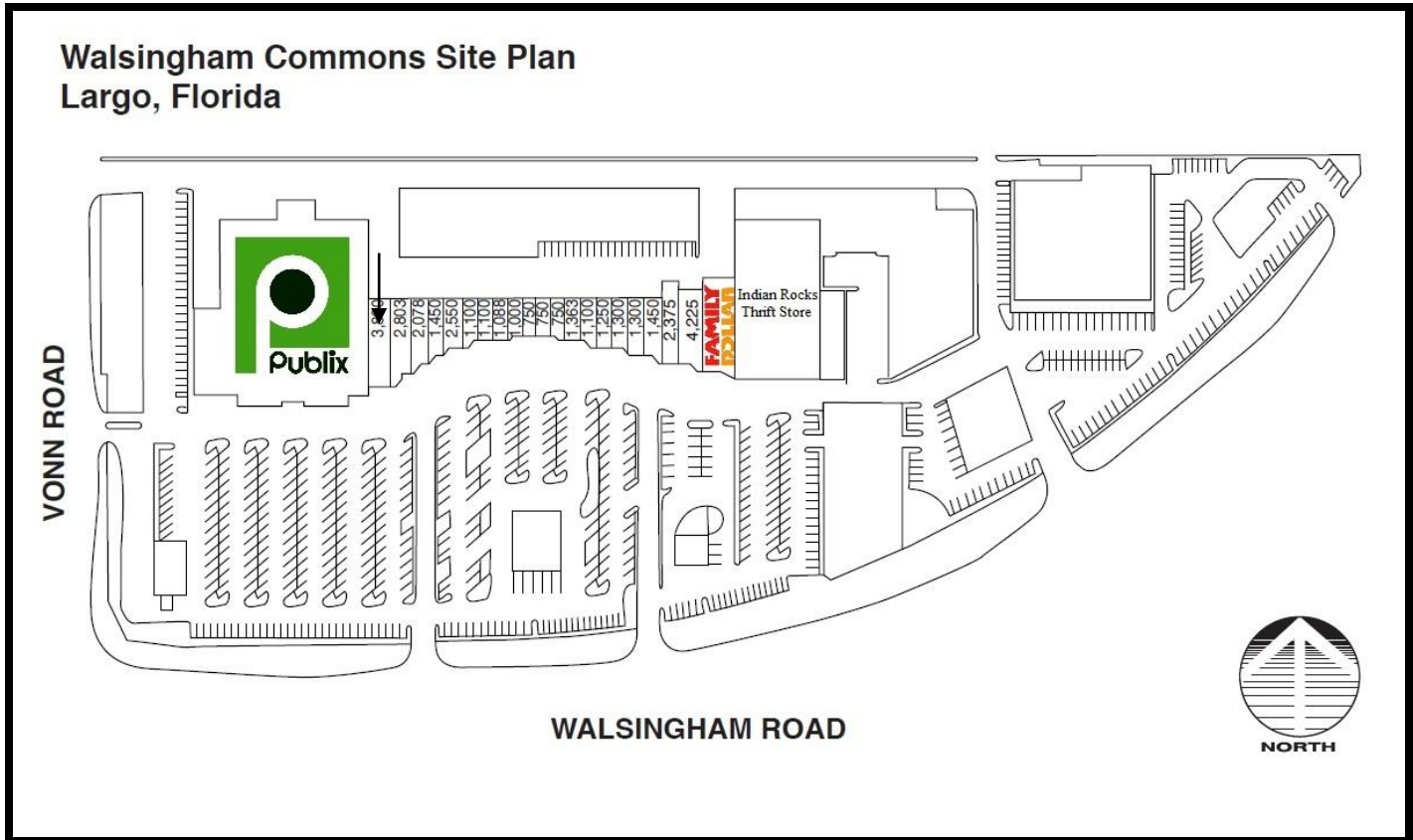


- Newly Renovated Shopping Center
- Brand New Publix Supermarket
- Anchored by Publix and Family Dollar
- Located on the Intersection of Walsingham Road and Vonn Road



4280 Professional Center Drive, Suite 100 • Palm Beach Gardens • Florida 33410  
(561) 966-0070 Phone • (561) 966-0260 Fax  
[www.nobleproperties.com](http://www.nobleproperties.com)

**Walsingham Commons Site Plan  
Largo, Florida**



**DEMOGRAPHICS:**

	<u>3 Mile</u>	<u>5 Mile</u>
Estimated 2023 Population	89,291	187,624
Projected 2028 Population	88,145	185,890
Estimated 2023 Households	41,686	88,050
Projected 2028 Households	41,520	87,979
2023 Average Household Income	\$97,300	\$97,808
2023 Median Age	54.7	54.2

**FOR LEASING INFORMATION:**

Florida Retail Partners

Kathryn Brandewie

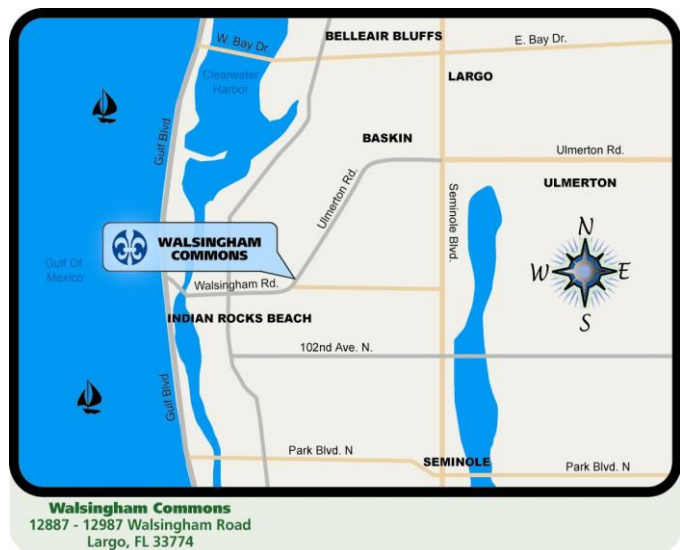
(214) 578-7929

[kathryn@floridaretailpartners.com](mailto:kathryn@floridaretailpartners.com)

Kiera Holubik

(708) 745-2852

[kiera@floridaretailpartners.com](mailto:kiera@floridaretailpartners.com)



**Walsingham Commons**  
12887 - 12987 Walsingham Road  
Largo, FL 33774